

OPERATION

When the Model Dynamo is operating, the power supply light will be ON. If the light does not come on when power is supplied to the air cleaner, refer to the troubleshooting section below. The Model Dynamo uses little power (less than 2 watts) and is on continuously. The furnace fan should operate continuously for increased air filtration in your home.

TROUBLESHOOTING

If the air cleaner does not seem to be functioning, check the following:

1. Check that the power supply light is "ON". If the light is "OFF", check the power supply and wiring connections.
2. If the power is not being supplied to the power head, it may need to be replaced. Contact your dealer / contractor or call customer service at ECOairflow.

MAINTENANCE

We recommend the filter be checked and cleaned once per month.

Before servicing the filter, first disconnect the power supply, then remove the filter from the designated slot.

Remove any build up on the outside screen with either a soft cloth or the soft brush attachment of a vacuum.

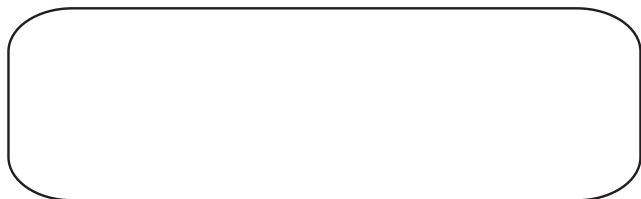
Once the screen has been cleaned, hold the filter up to a light. If the black strings can be seen, the filter pads DO NOT need to be replaced. If the black strings cannot be seen, replace the pads. The filter pads typically need replacing every three months.

If the filter pads need replacing, follow the steps illustrated on the reverse side of this document.

2 WAYS TO ORDER

1

1. Call your dealer/contractor



2

Order direct from ECOairflow

- . tel: 1:877-347-3569
- . fax: 1-866-367-8826
- . online: www.ecoairflow.com
- . email: customerservice@ecoairflow.com

NOTE:

When ordering, please let us know the filter model number and filter size.

MANUFACTURED BY

ECOairflow

ECOairflow

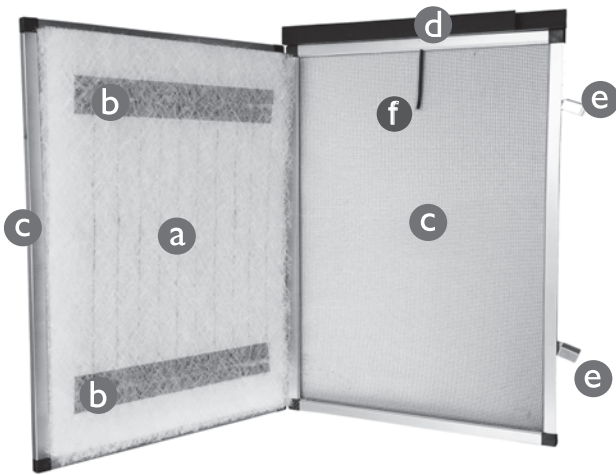
1885 Clements Road, Unit 210, Pickering, ON L1W 3V4
tel: 1:877-347-3569 . fax: 1-866-367-8826
www.ecoairflow.com

Your filter uses one filter pad per change. The symmetrical design allows you to install the pad in any orientation. Once inplaced this pad will capture all the prticles and pollutants and stop them inside the pad.

For optimum effectiveness, we recommend that you change those filter pads, at a minimum, every three months.

Components

- a FILTER PAD
- b CARBON STRIP
- c PANEL
- d POWERHEAD
- e LATCHE
- f PROBE



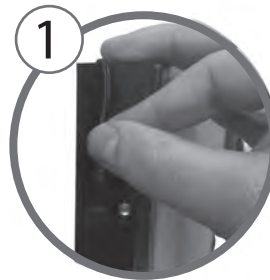
How to order

To order your certified ECOairflow filter pads

1. Call your local contractor
2. order direct from ECOairflow
 - . tel: 1:877-347-3569
 - . fax:1-866-367-8826
 - . online: www.ecoairflow.com
 - . email: customerservice@ecoairflow.com

When ordering, please let us know ...
the filter model number and filter size

Maintaining your electronic air cleaner is EASY!
Just follow these simple instructions.



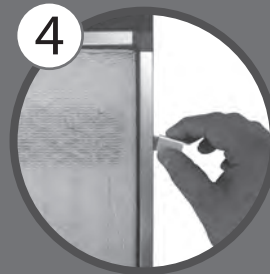
1 DISCONNECT THE POWER SUPPLY.
Remove the air cleaner from the designated slot before servicing.



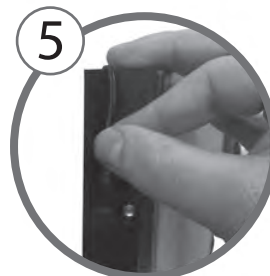
2 Place the air cleaner on a flat surface. Open all pop-up corners, **e** open the front panel and DISCARD the used filter pad. DO NOT ATTEMPT TO WASH OR VACUUM THE FILTER PADS.



3 Place the new filter pad **a** in the filter unit. The carbon strip **b** at either end of the pad must make contact with probe in order to get maximum efficiency out of your filter unit.



4 Make sure the filter pad is snug to the rails of the filter with no gaps. Close the front panel, then close both latches. **e**



5 Place the air cleaner back into the designated slot and reconnect the power.

You're done... it's that simple!